

Produktübersicht ULTRACAP mittlere Zellen Fab. SPSCap

CapComp GmbH - Gründelbachstr. 10 - D-71691 Freiberg/Neckar

www.capcomp.de - shop24.capcomp.de - Tel: +49 7141 298950

Stand 03.06.2023



Series	Part Number	Voltage (V)	Capacity (F)	ESR (mΩ)		LC (mA) (RT 72hrs)	Rated Current (A) 15/40°C	Peak Current (A)	Max Energy Stored (Wh)	Max Energy Density (Wh/Kg)	Weight (g)	Packaging (pcs/carton)	Dimension (mm)		
				AC@(1kHz)	DC								Diameter	L1	L2
CDCM SPD	CDCM0350C0-0002R7SPD	2.7	350	1,5	2,5	0,5	24/39	252	0,35	4,9	72	64/128	33,3	63,8	68,7
	CDCM0500C0-0002R7SPD	2.7	500	1,5	2,5	1	27/43	300	0,51	5,6	90	64/128	33,3	79,8	84,7
	CDCM0600C0-0002R7SPD	2.7	600	1,4	2,4	1,2	29/47	332	0,61	5,2	116	64/128	33,3	93,8	98,7
	CDCM0720C0-0002R7SPD	2.7	720	1,3	1,8	1,4	36/59	423	0,73	5,8	125	64/128	33,3	112,8	118,7
	CDCM0800C0-0002R7SPD	2.7	800	1,3	1,8	1,6	36/59	443	0,81	6,5	125	64/128	33,3	112,8	118,7
CDCM SPZ	CDCM0360C0-0002R7SPZ	2.7	360	3,2	4,0	0,5	21/34	199	0,36	5,0	72	72/288	35	62	68
	CDCM0470C0-0002R7SPZ	2.7	400	3,2	4,0	1,2	21/34	220	0,48	6,4	74	72/288	35	62	68
	CDCM0600C0-0002R7SPZ	2.7	600	3,1	3,9	1,5	22/36	242	0,61	6,8	90	60/180	35	71	77

CDCM SPD



CDCM SPZ



CDCM: Single Cylindrical Cell Medium

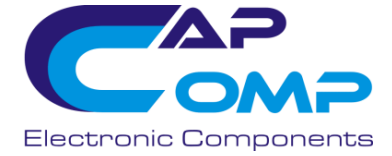
SP_: Soldering Pillar

Produktübersicht ULTRACAP Großzellen Fab. SPSCap

CapComp GmbH - Gründelbachstr. 10 - D-71691 Freiberg/Neckar

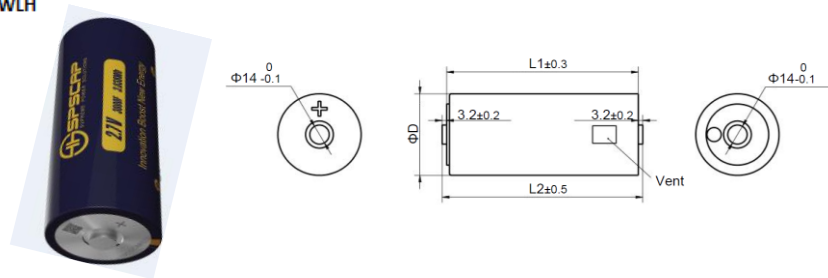
www.capcomp.de - shop24.capcomp.de - Tel: +49 7141 298950

Stand 03.06.2023

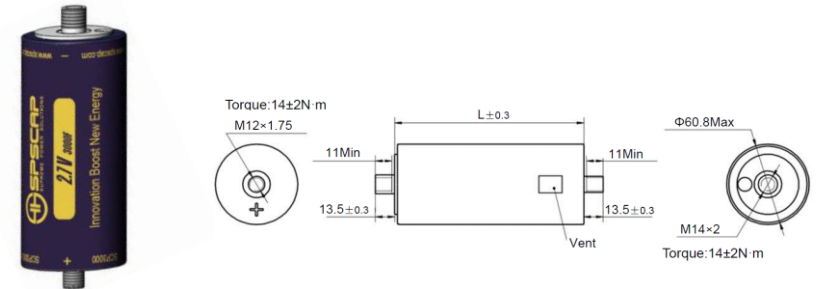


Series	Part Number	Voltage (V)	Capacitiy (F)	ESR (mΩ)		LC (mA) (RT 72hrs)	Rated Current (A) 15/40°C	Peak Current (A)	Max Energy Stored (Wh)	Max Energy Density (Wh/Kg)	Weight (g)	Packaging (pcs/carton)	Dimension (mm)		
				AC@(1kHz)	DC								Diameter	L1	L2
CDCL WLH	CDCL0650CO-0002R7WLH	2.7	650	0,7	1	1,8	54/87	577	0,66	3,1	213	16/64	60,8	51,5	57,9
	CDCL1200CO-0002R7WLH	2.7	1200	0,4	0,58	2,5	71/116	955	1,22	4,2	291	16/48	60,8	74	80,4
	CDCL1500CO-0002R7WLH	2.7	1500	0,33	0,47	3,0	83/135	1187	1,52	4,5	339	16/48	60,8	85	91,4
	CDCL2000CO-0002R7WLH	2.7	2000	0,25	0,35	3,5	103/168	1588	2,03	5,0	402	16/32	60,8	102	108,4
	CDCL3000CO-0002R7WLH	2.7	3000	0,22	0,29	5,2	128/208	2165	3,04	5,6	530	16/32	60,8	138	144,4
	CDCL4000CO-0002R85WLH	2.85	4000	0,22	0,30	10,0	127/201	2590	4,51	9,0	500	16/32	60,8	138	144,4
CDCL STA	CDCL0650CO-0002R7STA	2.7	650	0,70	0,8	1,8	54/87	577	0,66	3,00	219	16/64	60,8	51,5	68,5
	CDCL1200CO-0002R7STA	2.7	1200	0,40	0,58	2,5	71/116	955	1,22	4,10	297	16/64	60,8	74	101
	CDCL1500CO-0002R7STA	2.7	1500	0,33	0,47	3	83/135	1187	1,52	4,40	345	16/48	60,8	85	112
	CDCL2000CO-0002R7STA	2.7	2000	0,25	0,35	3,5	103/168	1588	2,03	5,00	408	16/32	60,8	102	129
	CDCL3000CO-0002R7STA	2.7	3000	0,22	0,29	5,2	128/208	2165	3,04	5,50	551	16/32	60,8	138	165
	CDCL3000CO-0002R7STB	2.7	3000	0,22	0,29	5,2	128/208	2165	3,04	5,50	551	16/32	60,8	138	165

CDCL WLH



CDCL STA



CDCL: Single Cylindrical Cell Large

WL_: Welding Laser

ST_: External Tread Connection

Produktübersicht ULTRACAP **Module1** Fab. SPSCap

CapComp GmbH - Gründelbachstr. 10 - D-71691 Freiberg/Neckar

www.capcomp.de - shop24.capcomp.de - Tel: +49 7141 298950

Stand 03.06.2023



Series	Part number	Voltage (V)	Cap (F)	ESR (mohm)		Leakage current (mA, RT 72hrs)	Rated Current (A) 15/40°C	Peak Current (A)	Max. Energy Stored (Wh)	Weight (kg)	Used Cells	Size(mm)
				AC @1KHz	DC							
16V	MDCM0058C0-0016R0TBZ	16	58		21	25	12/20	200	2,1	0,7	6 x 350F	227 x 50 x 76
	MDCL0200C0-0016R0SHC	16	200		3,6	2,5	/80	950	7,1	4,2	6 x 1200F	416 x 67 x 115
	MDCL0250C0-0016R0SHC	16	250		3,0	3,0	/80	1140	8,9	4,5	6 x 1500F	416 x 67 x 126
	MDCL0330C0-0016R0SHC	16	330		2,3	3,5			11,7	4,8	6 x 2000F	416 x 67 x 143
	MDCL0500C0-0016R0SHC	16	500	1,2	1,8	5,2	100/160	2000	17,8	5,7	6 x 3000F	416 x 67 x 179
	MDCL0666C0-0017R0SHC	17	666		1,86	14,5		2528	26,7	5,5	6x4000F/2,85V	416 x 67 x 179
48V	MDCL0036C0-0048R0SHC	48	36		16	2,0	37/60	500	11,5	8,5	18 x 650F	417 x 190 x 93
	MDCL0083C0-0048R0SHC	48	83		9,0	3,0	60/100	1100	26,5	10,6	18 x 1500F	417 x 190 x 126
	MDCL0111C0-0048R0SHC	48	111		6,5	3,5	xx/90	1500	35,5	12,0	18 x 2000F	417 x 190 x 143
	MDCL0165C0-0048R0SHZ	48	165	4,5	5,0	5,2	90/150	2000	52,8	14,5	18 x 3000F	417 x 190 x 179
	MDCL0165C0-0048R0SHL	48	165	4,5	5,0	5,2	90/150	2000	52,8	14,5	18 x 3000F	417 x 190 x 179
	MDCL0222C0-0051R0SHZ	51	222		5,5	16,0	85/	2500	81,0	14,5	18x4000F/2,85V	417 x 190 x 180
55 - 100V	MDCL0125C0-0064R0SHZ	64	125	6	8	5,2	100/160	2000	71,1	20	24 x 3000F	417 x 254 x 200
	MDCL0093C0-0080R0SHZ	80	93	9	13,5	26	100/160	2000	83,5	25	32 x 3000F	515 x 263 x 221
	MDCM0010C0-0090R0TBN	90	10	110	120	0,5	25	230	11,2	8,0	36 x 360F	290 x 100 x 275
> 100V	MDCM0005C8-0160R0TBZ	160	5,8	160	200	20	8/13	214	20,6	6,0	60 x 350F	365 x 232 x 80

16V/58F



16V/500F



48V/165F



64V/125F



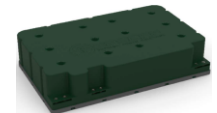
80V/93F



90V/10F



160V/5,8F



MDCM: Module Cylindrical Cells Medium

MDCL: Module Cylindrical Cells Large

Hinweis: Alle Angaben ohne Gewähr. Verbindlich sind die jeweiligen Angaben auf dem Datenblatt des Herstellers / Note: All information without guarantee. The respective information on the manufacturer's data sheet is binding.