

# S3M RELAY

**SHORI**

## ◆ Features

- High sensitivity in small package.
- Nominal power 0.6w and 0.8w.
- 20A/14VDC switching capacity.
- SPNO, SPDT and Plastic sealed & Flow solder type are available.



## ◆ Coil Data [at 23°C]

- Standard Type

Rated voltage ( V )	Coil Resistance ±10% (Ω)	Rated Current ±10% (mA)	Pick up Voltage (Max)	Drop out Voltage (Min)	Max continuous Voltage	Power consumption At rated Voltage
3	11	267	60% of rated voltage	8% of rated voltage	130% Max of Rated voltage	Approx.0.8W
5	31	160				
6	45	133				
9	100	90				
12	180	66.7				
24	727	33				

- High sensitivity Type

Rated voltage ( V )	Coil Resistance ±10% (Ω)	Rated Current ±10% (mA)	Pick up Voltage (Max)	Drop out Voltage (Min)	Max continuous Voltage	Power consumption At rated Voltage
3	15	200	60% of rated voltage	8% of rated voltage	130% Max of Rated voltage	Approx.0.6W
5	41.6	120				
6	60	100				
9	135	66.7				
12	240	50				
24	960	25				

## ◆ Contact Rating

Resistive load	20A 14VDC
----------------	-----------

## ◆ Type List

Terminal style	Contact form	Designation(provided with)	
		Sealed type	Sealed type washable
PCB terminal	1A (SPNO)	S3M-12-1A	S3M-12-1AS
	1C (SPDT)	S3M-12	S3M-12-S

### ◆ Ordering information

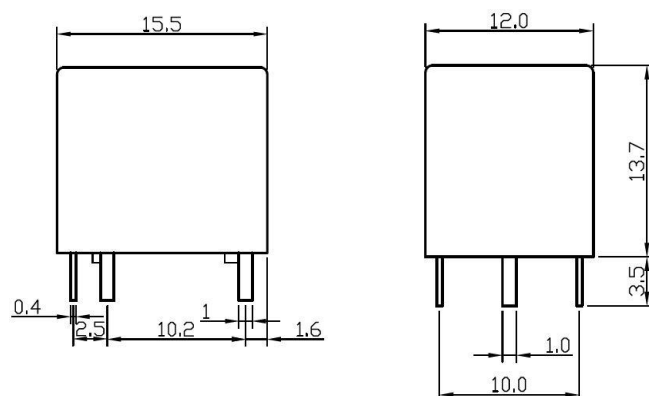
S3M - 12 B - 1A S  
 1            2            3    4

1. S3M -- Basic series designation
2. 12 -- Coil Voltage (3V~48V)
3. Power Consumption  
    B -- High sensitivity Type(0.6W)  
    Blank-- Standard Type(0.8W)
4. 1A -- 1 Form A, Single pole normally open  
    Blank -- 1 Form C, Single pole double throw
5. S -- Sealed type washable  
    Blank -- Sealed type

### ◆ Specification

Contact material	Silver Alloy	
Contact resistance	100 mΩ Max	
Operate time	10 ms Max	
Release time	5 ms Max	
Insulation resistance	100 MΩ Min. (DC 500V)	
Dielectric strength	Between open contact : AC 500V ,50/60Hz 1 min.	
	Between contact and coil : AC 500V, 50/60Hz 1 min.	
Vibration resistance	Operating extremes	10~50Hz, amplitude 1.5 mm
	Damage limits	10~50Hz, amplitude 1.5 mm
Shock resistance	Operating extremes	10G
	Damage limits	100G
Life expectancy	Mechanical	10,000,000 operations (frequency 18,000 operations/hr)
	Electrical	100,000 operations (frequency 360 operations/hr)
Operating ambient temperature	-30~+85°C(no freezing)	
Weight	Approx.7g	

### ◆ Outline Dimensions



Dimension:mm

TOLERANCE:  
 <1mm:±0.2mm  
 1-5mm:±0.3mm  
 >5mm :±0.4mm

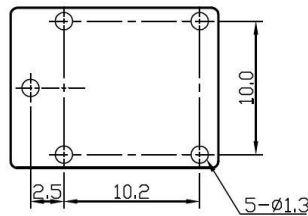
# S3M RELAY

## SHORI

### ◆ Wiring Diagram (BOTTOM VIEW)



### ◆ PC Board Layout (BOTTOM VIEW)



### ◆ Engineering Data

