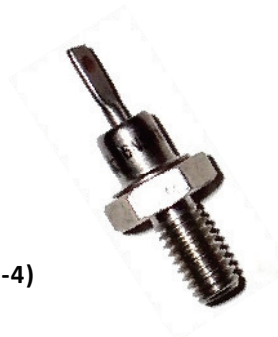


## Schottky Power Diode, 35A

**Features**

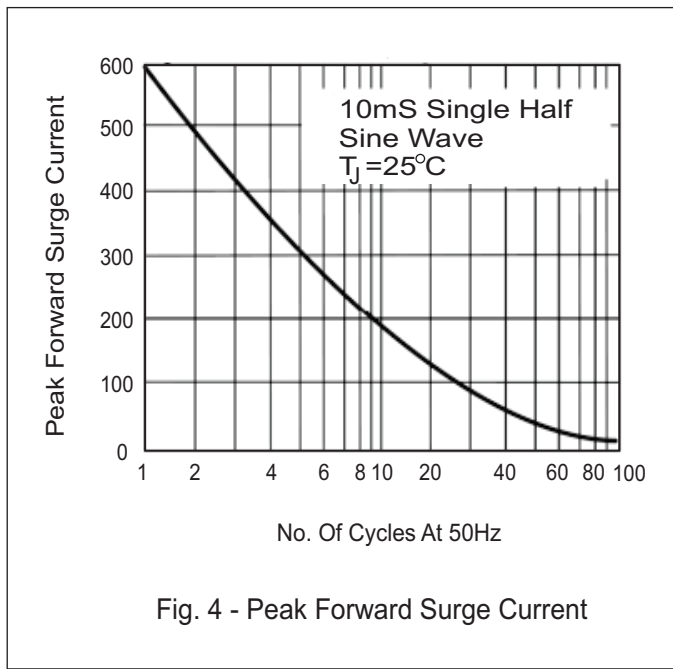
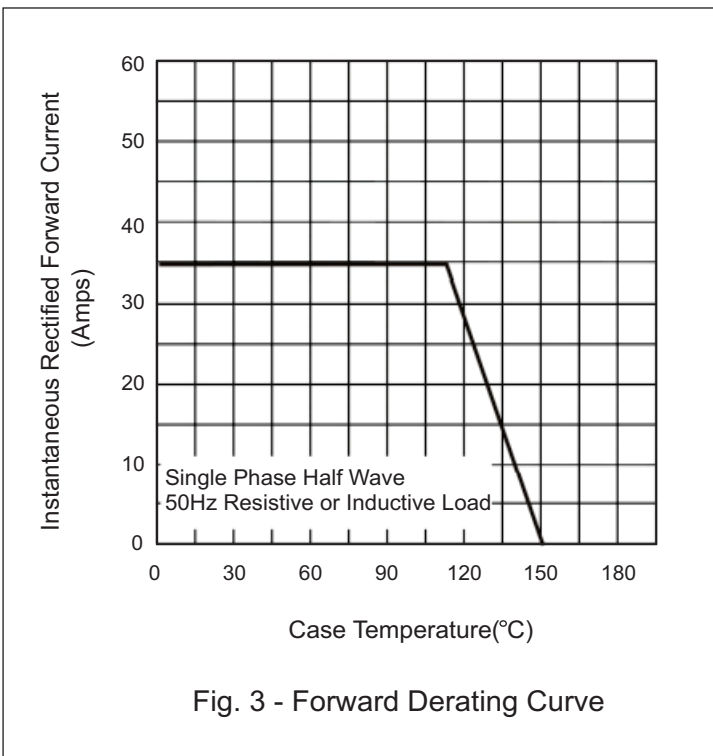
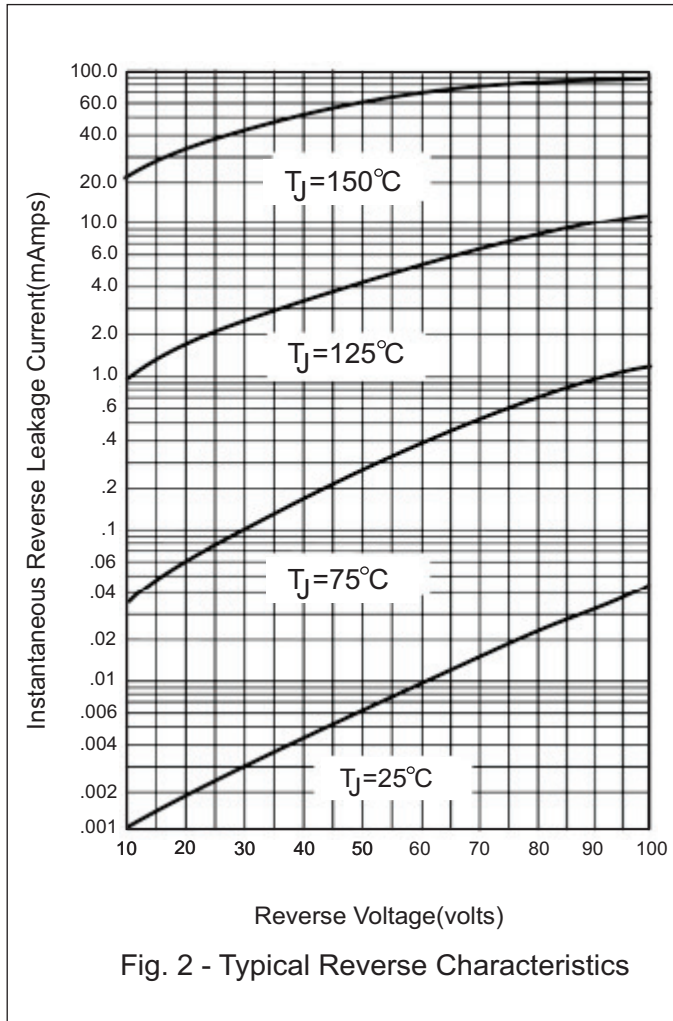
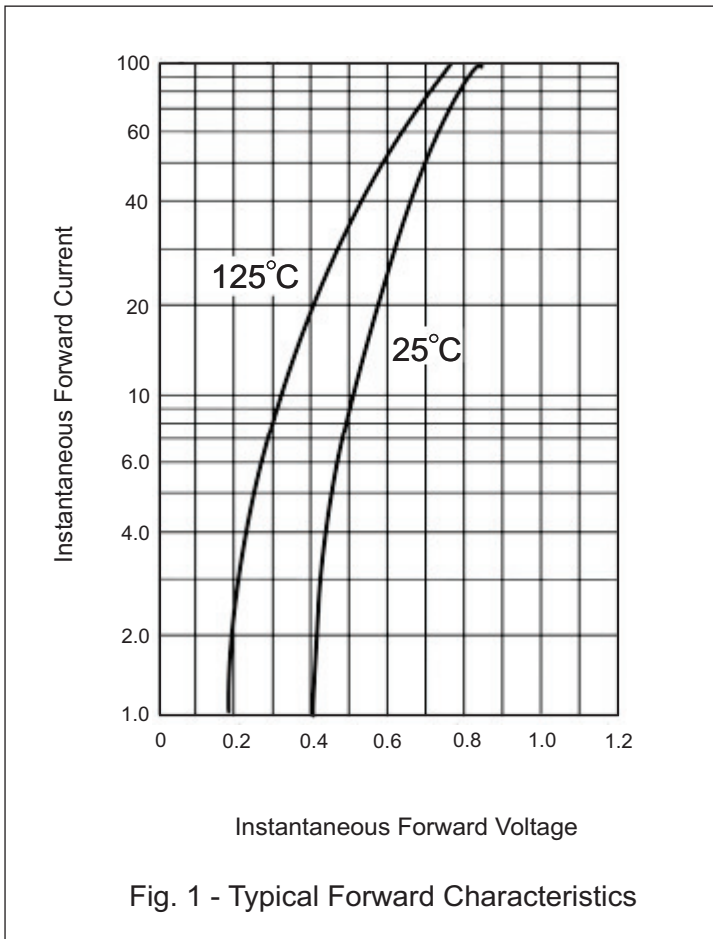
- Fast Switching
- Low forward voltage drop
- High surge capability
- High efficiency, low power loss
- Normal and Reverse polarity



DO-203AA (DO-4)

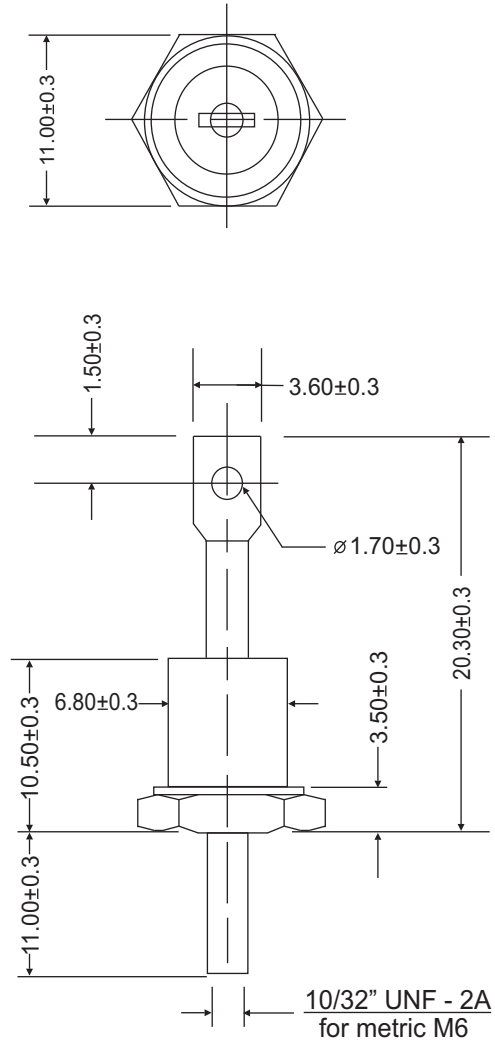
Maximum Ratings ( $T_J = 25^\circ\text{C}$ , unless otherwise noted)							
Parameter	Test Conditions	Symbol	MBR3545(R)	MBR3560(R)	MBR3580(R)	MBR35100(R)	Unit
Repetitive peak reverse voltage		$V_{RRM}$	45	60	80	100	V
RMS reverse voltage		$V_{RMS}$	32	42	57	70	V
DC blocking voltage		$V_{DC}$	45	60	80	100	V
Continuous forward current	$T_C \leq 110^\circ\text{C}$	$I_F$	35	35	35	35	A
Surge non-repetitive forward current, half-sine wave	$T_C = 25^\circ\text{C}$	$I_{FSM}$	600	600	600	600	A
Forward voltage	$I_F = 35\text{ A}$ $T_J = 25^\circ\text{C}$	$V_F$	0.68	0.75	0.84	0.84	V
Reverse current	$V_R = 20\text{ V}$ , $T_J = 25^\circ\text{C}$	$I_R$	1.5	1.5	1.5	1.5	mA
	$V_R = 20\text{ V}$ , $T_J = 125^\circ\text{C}$		25	25	25	25	

Thermal & Mechanical Specifications ( $T_J = 25^\circ\text{C}$ , unless otherwise noted)						
Parameters	Symbol	MBR3545(R)	MBR3560(R)	MBR3580(R)	MBR35100(R)	Unit
Maximum thermal resistance, junction to case	$R_{th(jc)}$	1.5				$^\circ\text{C}/\text{W}$
Operating junction temperature range	$T_J$	-55 to 150				$^\circ\text{C}$
Storage temperature	$T_{stg}$	-55 to 175				$^\circ\text{C}$
Mounting torque (non-lubricated threads)	F	2.0				Nm
Approximate allowable weight	W	5.0				g



## Package Outline

DO-203AA (DO-4)



ALL DIMENSIONS IN MM