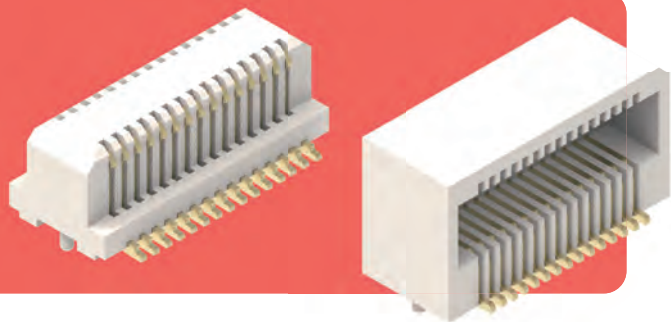


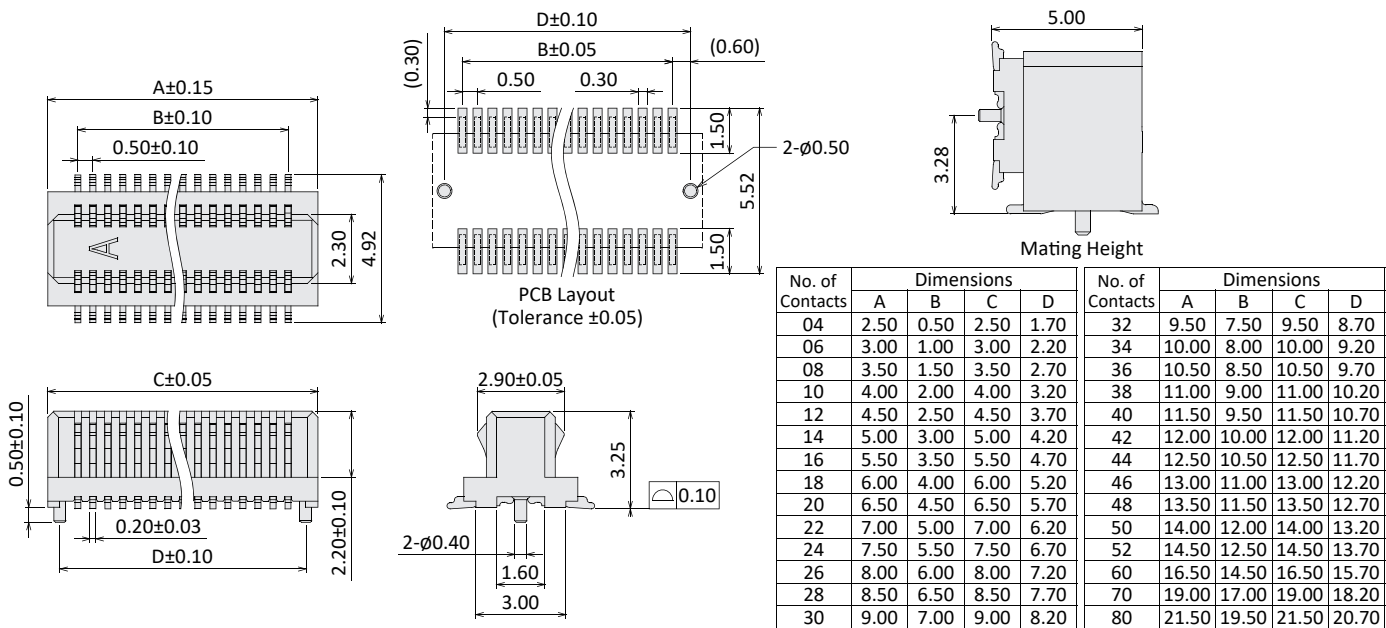


# Board to Board

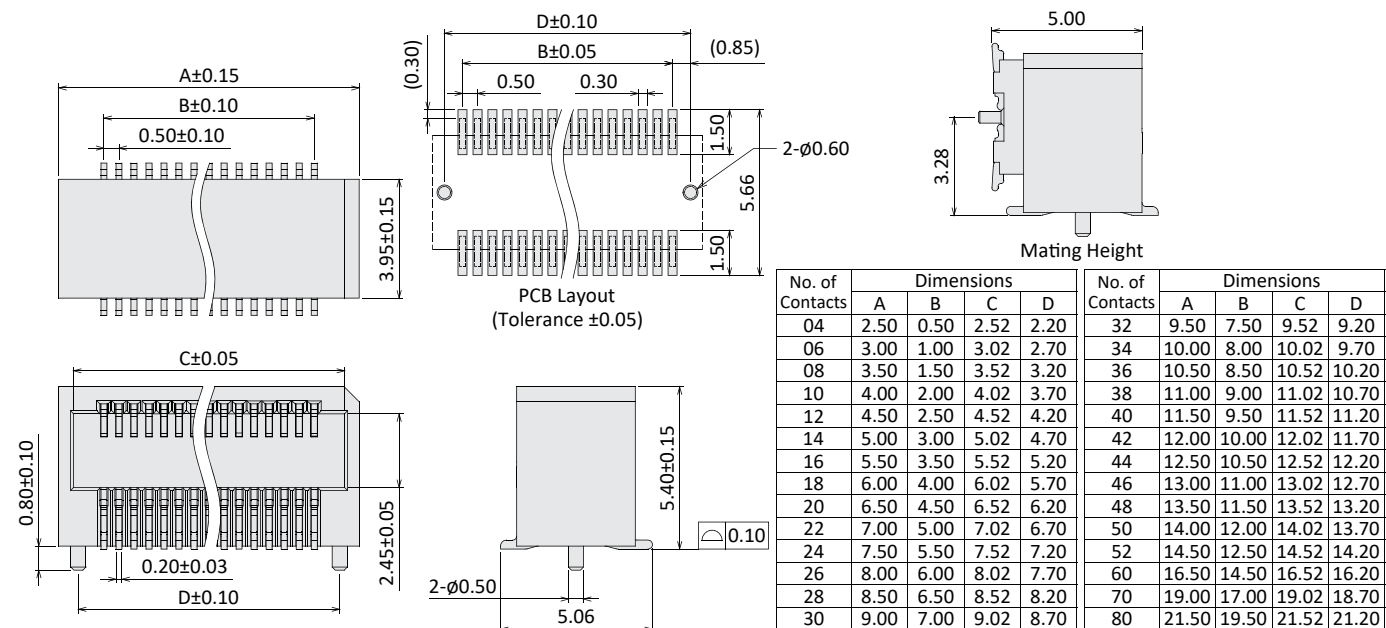
Current Rate: 0.5A  
 Voltage Rate: 50V AC/DC  
 Dielectric Voltage: 500V AC for one minute  
 Insulation Resistance: 100MΩ Min.  
 Contact Resistance: 20mΩ Max.  
 Material Contact: Copper Alloy, Gold Plated  
 Material Insulator: LCP, UL94V-0  
 Operating Temperature: -25°C~+80°C



## Board to Board Male SMT Type 0.50mm Pitch



## Board to Board Female SMT Type 0.50mm Pitch



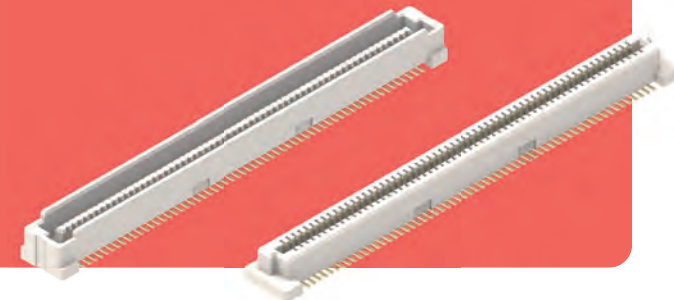
## Order Information

**B** 05 XX XX 4 - X XX X X

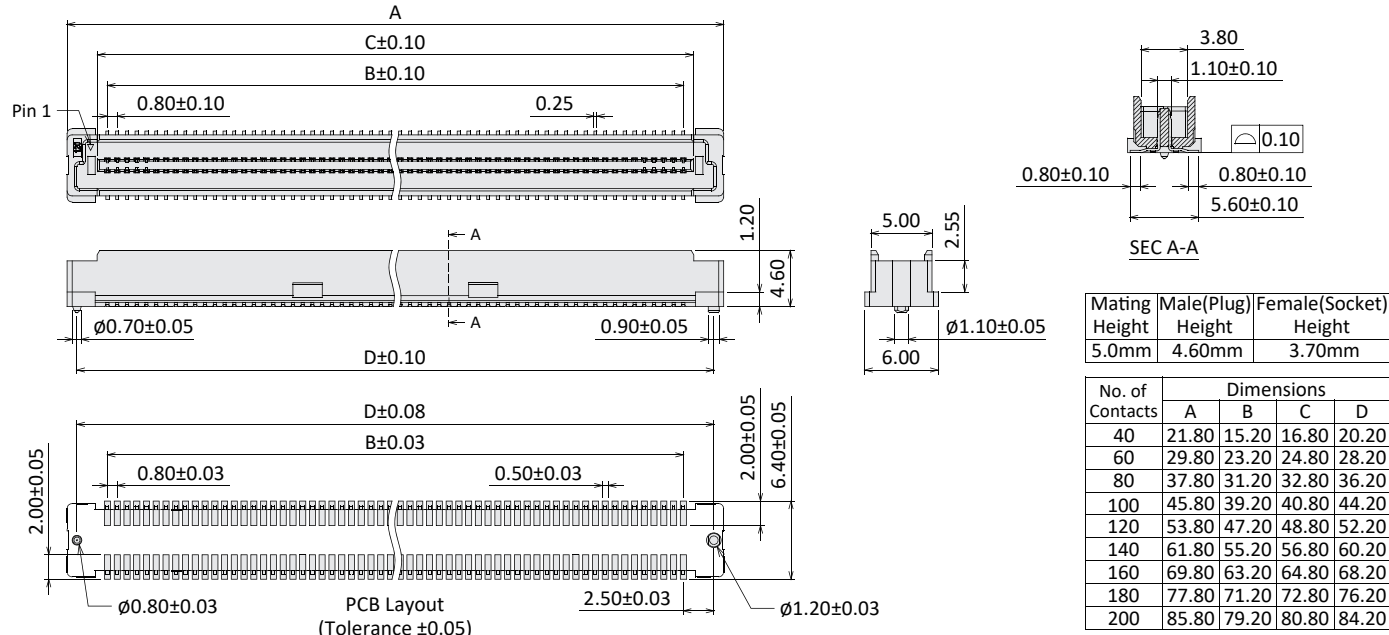
0.50mm Pitch    32: H=3.25mm  
54: H=5.4mm    G0: Gold Flash  
G1: Gold 3u"  
G2: Gold 5u"  
G3: Gold 10u"    4: RoHS + LCP    M: Male  
F: Female    No. of Contacts (04~80)    T: Tube  
P: Cap + Tube  
R: Cap + Reel    Blank: W/O Peg  
P: With Peg

# Board to Board

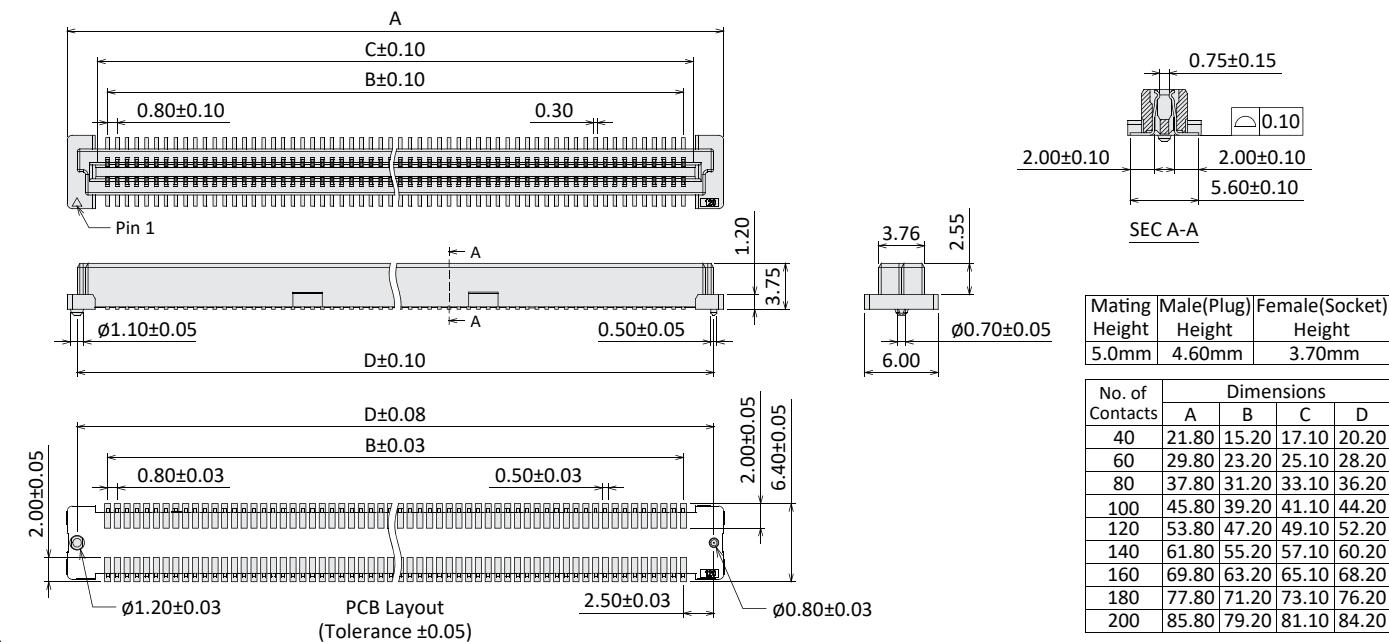
Current Rate: 0.5A  
 Voltage Rate: 100V AC/DC  
 Dielectric Voltage: 500V AC for one minute  
 Insulation Resistance: 500MΩ Min.  
 Contact Resistance: 20mΩ Max.  
 Material Contact: Copper Alloy, Gold/Tin  
 Material Insulator: LCP, UL94V-0  
 Operating Temperature: -25°C~+80°C



## Board to Board Male SMT Type 0.80mm Pitch



## Board to Board Female SMT Type 0.80mm Pitch



## Order Information

**B** 08 XX XX 4 - X XX X P

0.80mm Pitch    46: H=4.6mm  
37: H=3.75mm    G0: Gold Flash  
G1: Gold 3u"  
G2: Gold 5u"  
G3: Gold 10u"    4: RoHS + LCP    M: Male  
F: Female    No. of Contacts (04~200)    T: Tube  
P: Cap + Tube  
R: Cap + Reel    P: With Peg

