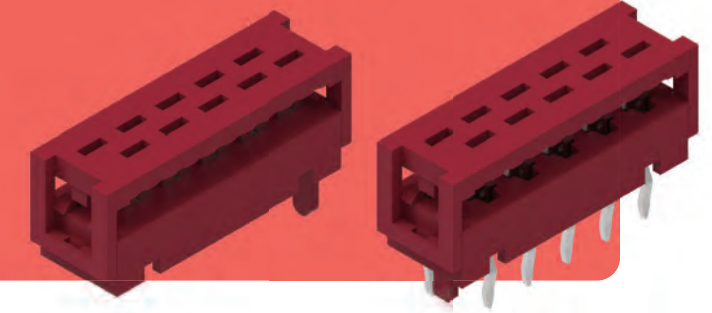


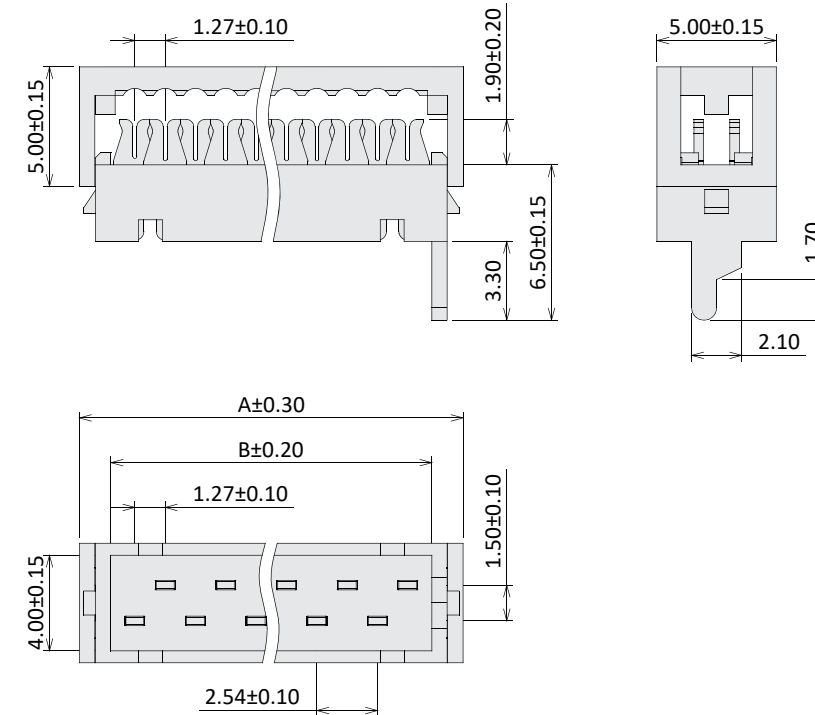
Micro Match

Current Rate: 1A
 Dielectric Voltage: 500V AC for one minute
 Insulation Resistance: 1000MΩ Min.
 Contact Resistance: 20mΩ Max.
 Material Contact: Copper Alloy, Gold / Tin
 Material Insulator: PBT, UL94V-0
 Operating Temperature: -40°C~+105°C



Micro Match IDC Type

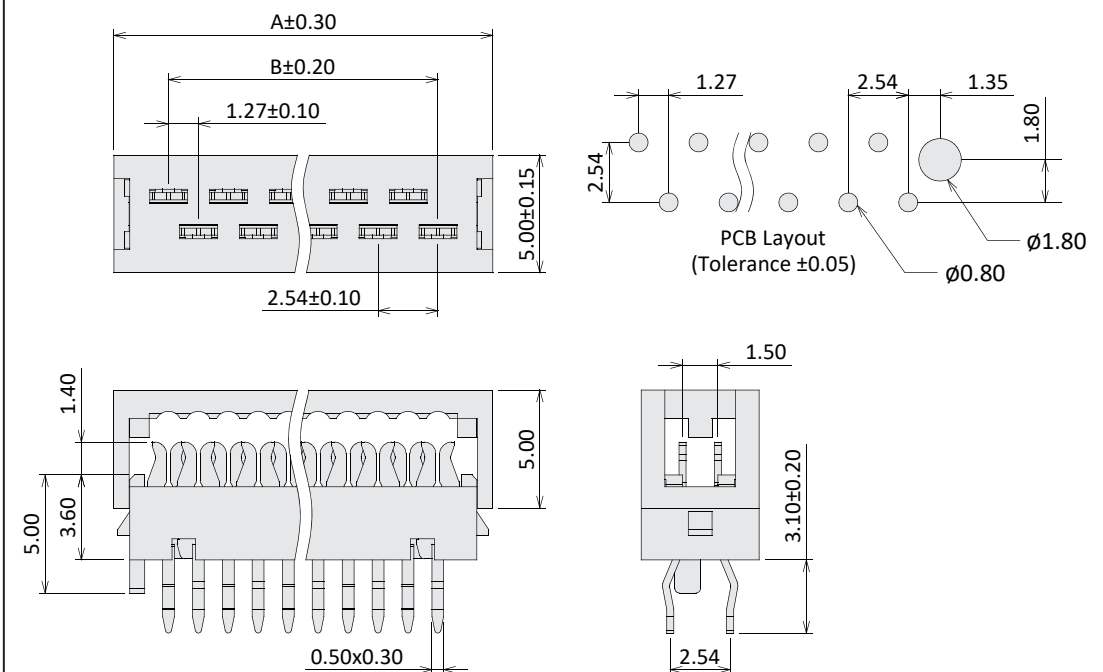
Part No.: MMIDC-M XX
 No. of Contacts



No. of Contacts	Dimensions	
	A	B
04	8.45	2.54
06	10.99	5.08
08	13.53	7.62
10	16.07	10.16
12	18.61	12.70
14	21.15	15.24
16	23.69	17.78
18	26.23	20.32
20	28.77	22.86
22	31.31	25.40
24	33.85	27.94
26	36.39	30.48

Micro Match DIP Plug Type

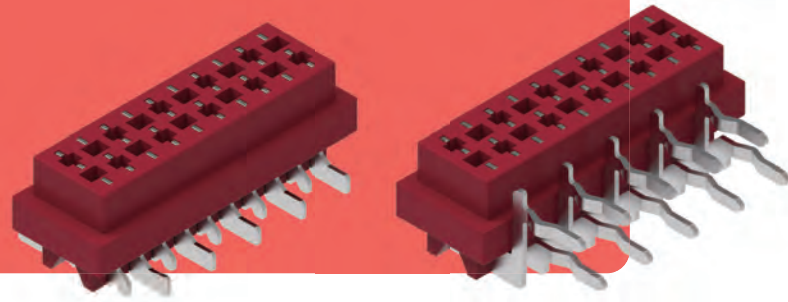
Part No.: MMIDCP- XX
 No. of Contacts



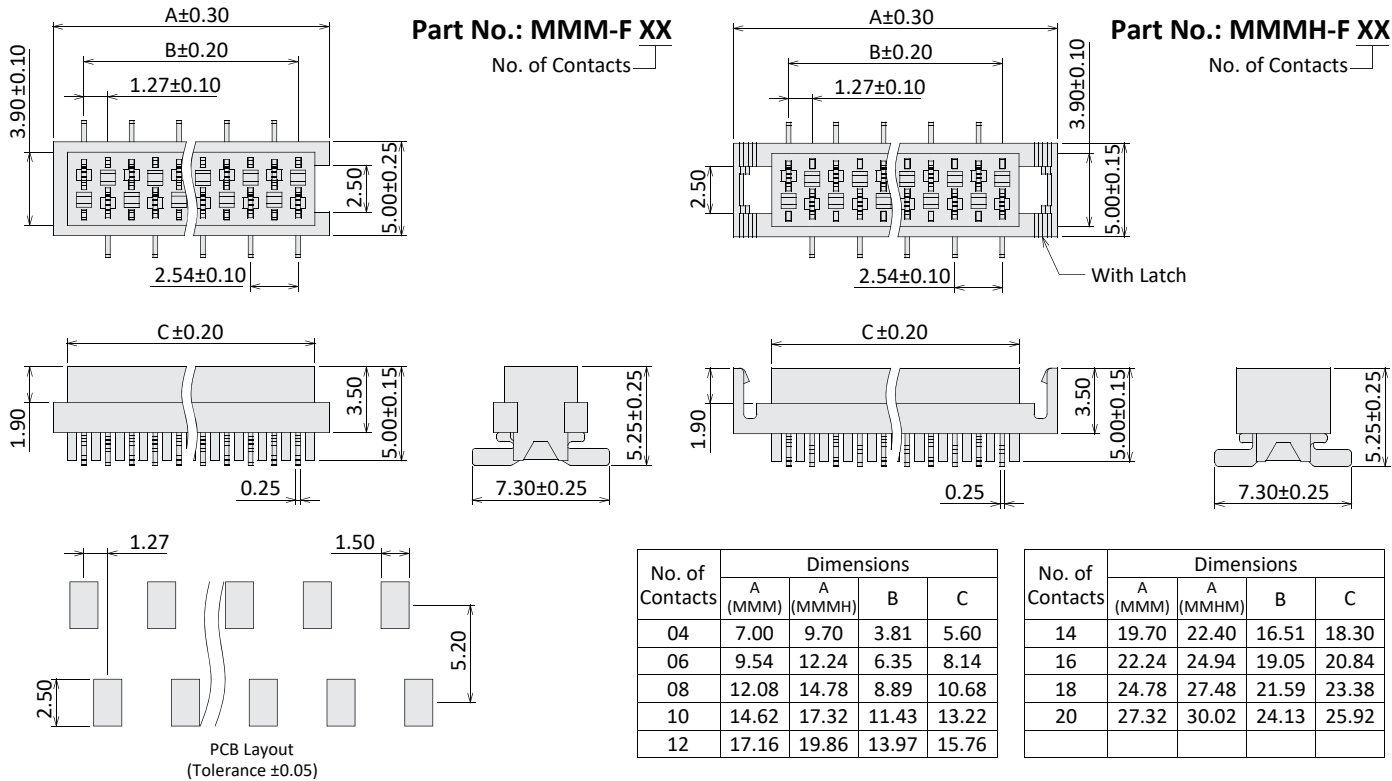
No. of Contacts	Dimensions	
	A	B
04	8.45	2.54
06	10.99	5.08
08	13.53	7.62
10	16.07	10.16
12	18.61	12.70
14	21.15	15.24
16	23.69	17.78
18	26.23	20.32
20	28.77	22.86
22	31.31	25.40
24	33.85	27.94
26	36.39	30.48

Micro Match

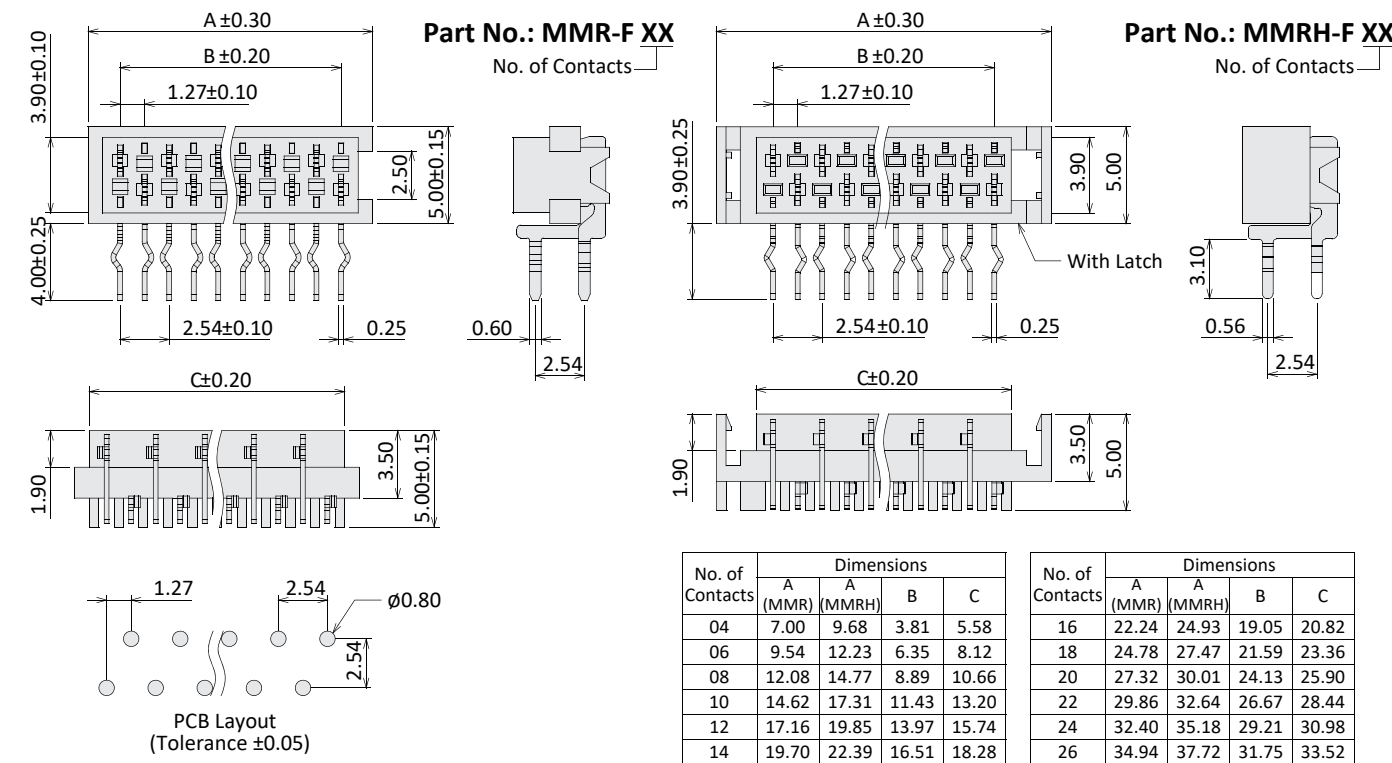
Current Rate: 1A
 Dielectric Voltage: 500V AC for one minute
 Insulation Resistance: 1000MΩ Min.
 Contact Resistance: 20mΩ Max.
 Material Contact: Copper Alloy, Gold / Tin
 Material Insulator: Nylon 46, UL94V-0
 Operating Temperature: -40°C~+105°C



Micro Match SMT / SMT With Latch Type

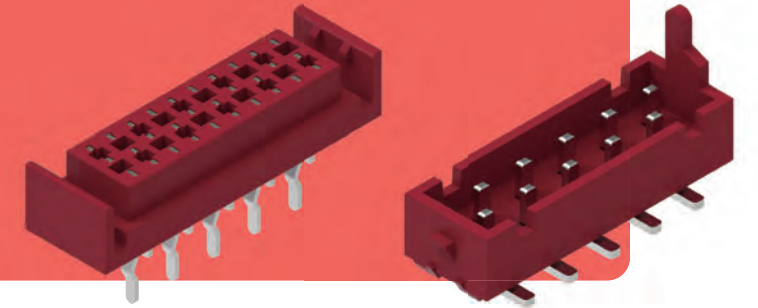


Micro Match Right Angle / Right Angle With Latch Type

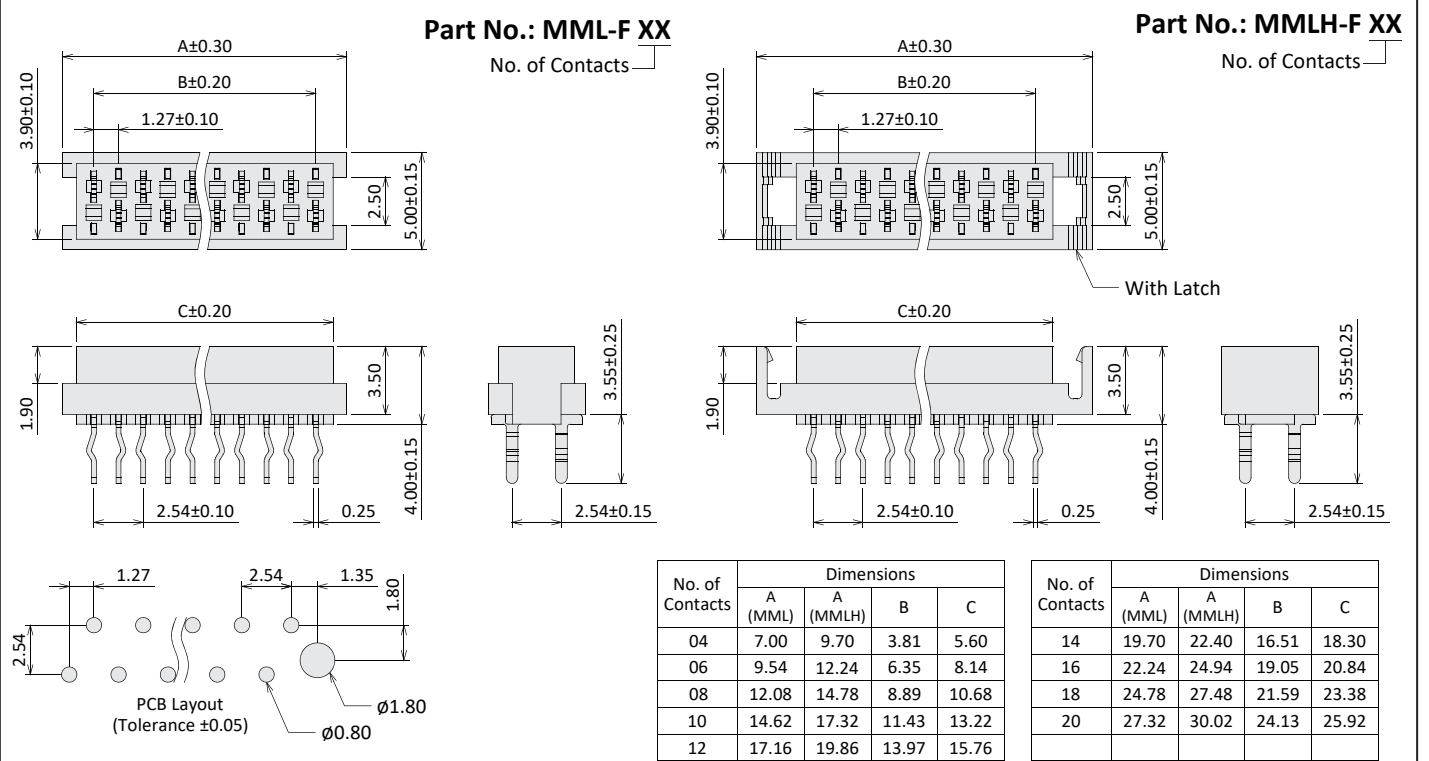


Micro Match

Current Rate: 1A
 Dielectric Voltage: 500V AC for one minute
 Insulation Resistance: 1000MΩ Min.
 Contact Resistance: 20mΩ Max.
 Material Contact: Copper Alloy, Tin Plated
 Material Insulator: Nylon 46, UL94V-0
 Operating Temperature: -40°C~+105°C



Micro Match Straight / Straight With Latch Type



Micro Match Male SMT / Male Straight Type

