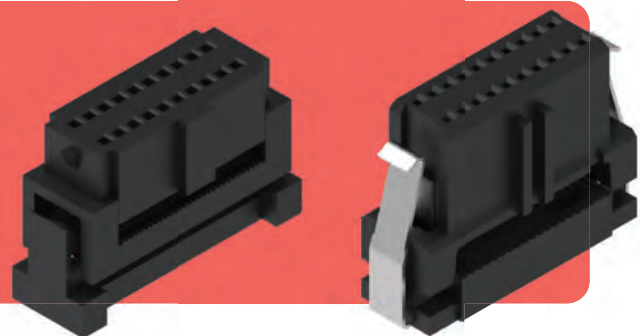


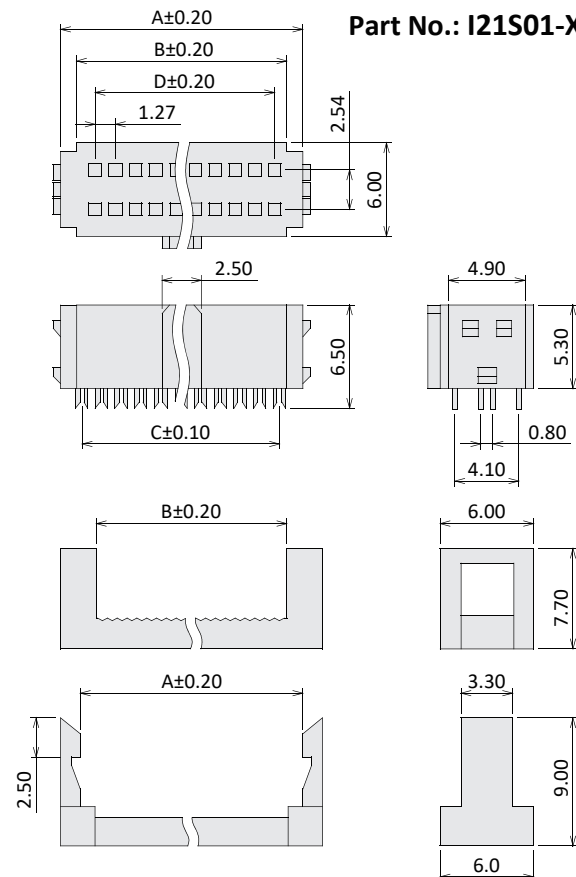
IDC Socket

Current Rate: 1A
 Dielectric Voltage: 500V AC for one minute
 Insulation Resistance: 1000MΩ Min.
 Contact Resistance: 30mΩ Max.
 Material Contact: Copper Alloy, Gold Plated
 Material Insulator: PBT or LCP, UL94V-0
 Operating Temperature: -40°C~+105°C



IDC Socket 1.27x2.54mm Pitch

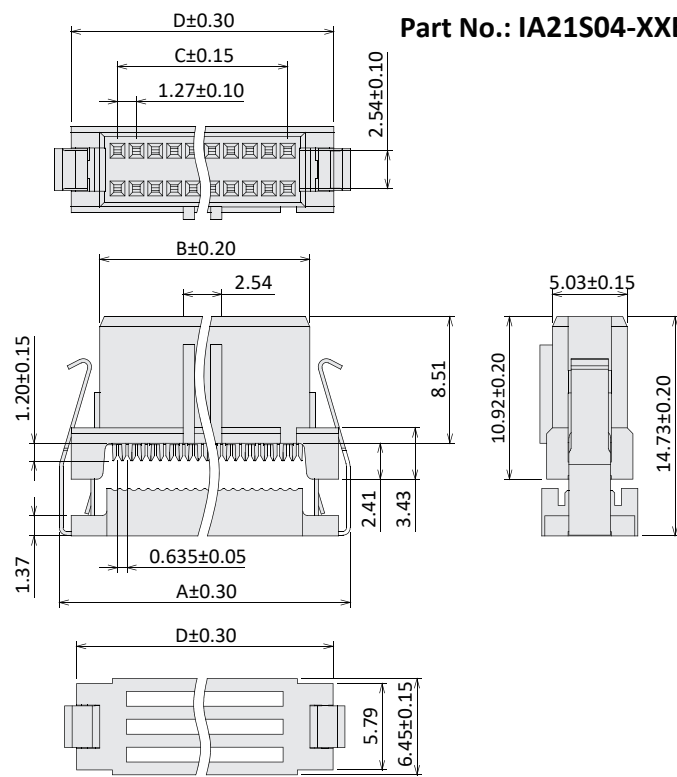
Part No.: I21S01-XXBX



No. of Contacts	Dimensions			
	A	B	C	D
06	5.81	3.91	3.18	2.54
08	7.08	5.18	4.45	3.81
10	8.35	6.45	5.72	5.08
16	12.16	10.26	9.53	8.89
20	14.70	12.80	12.07	11.43
26	18.51	16.61	15.88	15.24
30	21.05	19.15	18.42	17.78
40	27.40	25.50	24.77	24.13
50	33.75	31.85	31.12	30.48
60	40.10	38.20	37.47	36.83
68	45.18	43.28	42.55	41.91
80	52.80	50.90	50.17	49.53
100	65.50	63.60	62.87	62.23

IDC Socket 1.27x2.54mm Pitch

Part No.: IA21S04-XXB



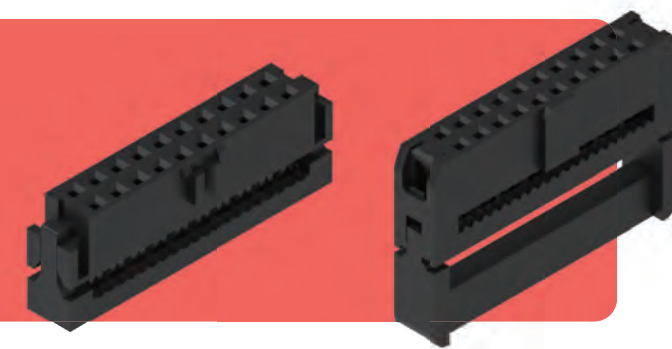
No. of Contacts	Dimensions			
	A	B	C	D
10	12.95	7.47	5.08	11.30
14	15.49	10.01	7.62	13.84
16	16.76	11.28	8.89	15.11
20	19.30	13.82	11.43	17.65
24	21.84	16.36	13.97	20.19
26	23.11	17.63	15.24	21.46
30	25.65	20.17	17.78	24.00
34	28.19	22.71	20.32	26.54
40	32.00	26.52	24.13	30.35
44	34.54	29.06	26.67	32.89
50	38.35	32.87	30.48	36.70
60	44.70	39.22	36.83	43.05
64	47.24	41.76	39.37	45.59
80	57.40	51.92	49.53	55.75
100	70.10	64.62	62.23	68.45

Order Information

X **21** **S0** **X** - **XX** **B** **X**
 I: IDC
 IA: IDC A Type
 1.27x2.54mm Pitch
 S0: Gold / Tin
 1: RoHS + PBT
 4: RoHS + LCP
 No. of Contacts (See Table)
 B: With Bump
 Blank: W/O SR
 R: With SR (For I21 only)

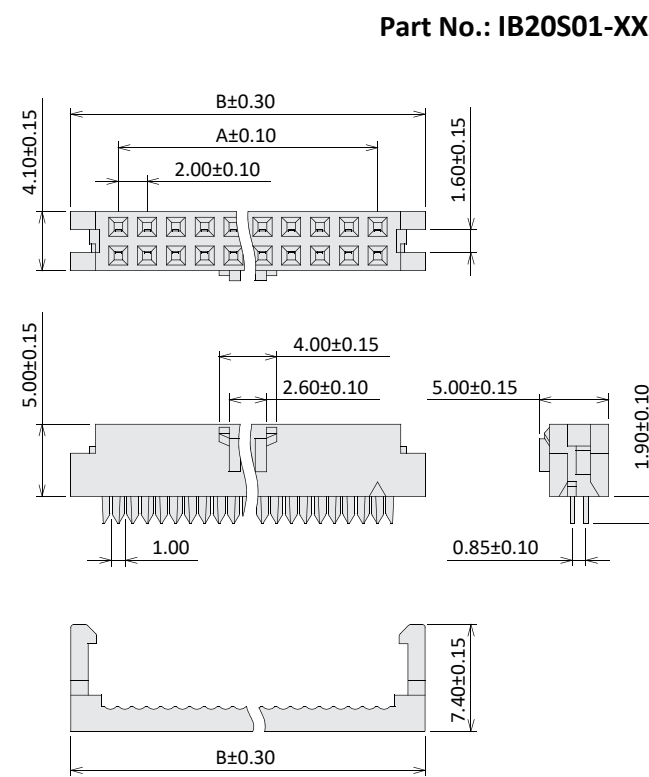
IDC Socket

Current Rate: 1A
 Dielectric Voltage: 500V AC for one minute
 Insulation Resistance: 1000MΩ Min.
 Contact Resistance: 20mΩ Max.
 Material Contact: Copper Alloy, Gold Plated
 Material Insulator: PBT, UL94V-0
 Operating Temperature: -40°C~+105°C



IDC Socket 2.00mm Pitch

Part No.: IB20S01-XXX

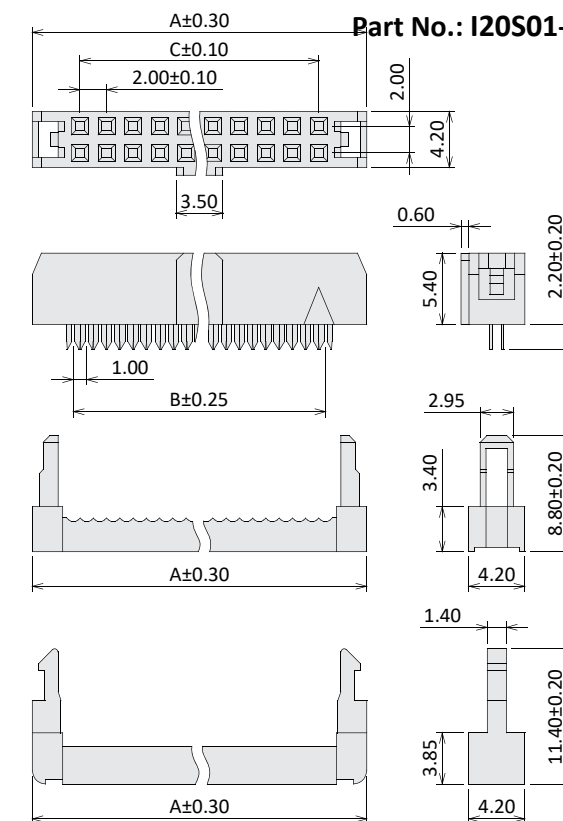


No. of Contacts	Dimensions	
	A	B
06	4.00	10.60
08	6.00	12.60
10	8.00	14.60
12	10.00	16.60
14	12.00	18.60
16	14.00	20.60
18	16.00	22.60
20	18.00	24.60
22	20.00	26.60
24	22.00	28.60
26	24.00	30.60
28	26.00	32.60
30	28.00	34.60
32	30.00	36.60

No. of Contacts	Dimensions	
	A	B
34	32.00	38.60
36	34.00	40.60
38	36.00	42.60
40	38.00	44.60
44	42.00	48.60
48	46.00	52.60
50	48.00	54.60
54	52.00	58.60
56	54.00	60.60
60	58.00	64.60
62	60.00	66.60
64	62.00	68.60
68	66.00	72.60

IDC Socket 2.00mm Pitch

Part No.: I20S01-XXBX



No. of Contacts	Dimensions		
	A	B	C
06	11.40	5.00	4.00
08	13.40	7.00	6.00
10	15.40	9.00	8.00
12	17.40	11.00	10.00
14	19.40	13.00	12.00
16	21.40	15.00	14.00
18	23.40	17.00	16.00
20	25.40	19.00	18.00
22	27.40	21.00	20.00
24	29.40	23.00	22.00
26	31.40	25.00	24.00
28	33.40	27.00	26.00
30	35.40	29.00	28.00
32	37.40	31.00	30.00

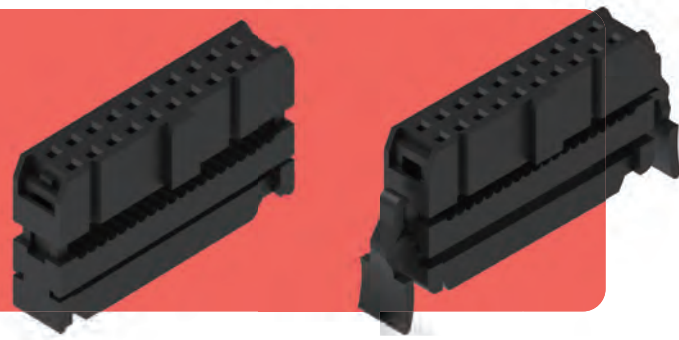
No. of Contacts	Dimensions		
	A	B	C
34	39.40	33.00	32.00
36	41.40	35.00	34.00
38	43.40	37.00	36.00
40	45.40	39.00	38.00
44	49.40	43.00	42.00
48	53.40	47.00	46.00
50	55.40	49.00	48.00
54	59.40	53.00	52.00
56	61.40	55.00	54.00
60	65.40	59.00	58.00
62	67.40	61.00	60.00
64	69.40	63.00	62.00
68	73.40	67.00	66.00
80	85.40	79.00	78.00

Order Information

X **20** **S0** **1** - **XX** **B** **X**
 IB: IDC B Type
 I: IDC
 2.00mm
 S0: Gold / Tin
 1: RoHS + PBT
 No. of Contacts (See Table)
 Blank: W/O Bump
 B: With Bump
 Blank: W/O SR
 R: With SR (For I20 only)

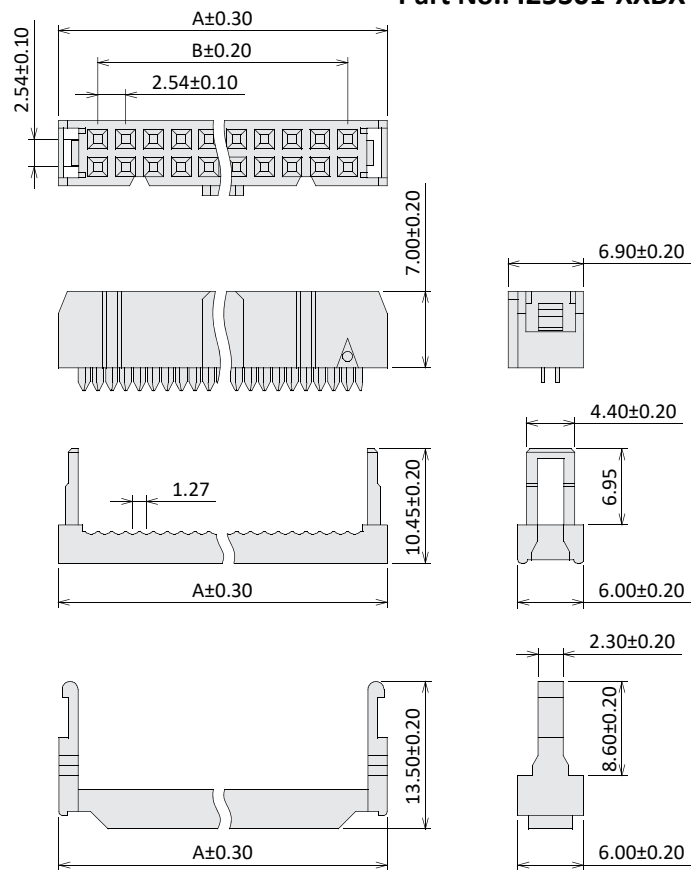
IDC Socket

Current Rate: 1A
 Dielectric Voltage: 500V AC for one minute
 Insulation Resistance: 1000MΩ Min.
 Contact Resistance: 20mΩ Max.
 Material Contact: Copper Alloy, Gold / Tin
 Material Insulator: PBT, UL94V-0
 Operating Temperature: -40°C~+105°C



IDC Socket 2.54mm Pitch

Part No.: I25S01-XXBX

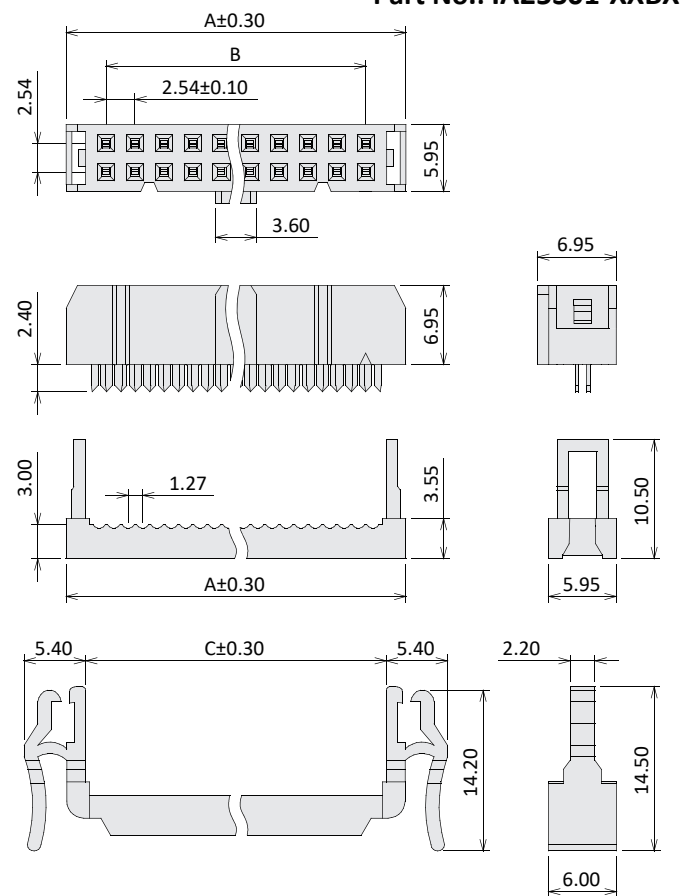


No. of Contacts	Dimensions	
	A	B
6	12.32	5.08
8	14.86	7.62
10	17.40	10.16
12	19.94	12.70
14	22.48	15.24
16	25.02	17.78
20	30.10	22.86
24	35.18	27.94
26	37.72	30.48

No. of Contacts	Dimensions	
	A	B
30	42.80	35.56
34	47.88	40.64
40	55.50	48.26
44	60.58	53.34
50	68.20	60.96
56	75.82	68.58
60	80.90	73.66
64	85.98	78.74

IDC Socket 2.54mm Pitch

Part No.: IA25S01-XXBX



No. of Contacts	Dimensions		
	A	B	C
10	17.26	10.16	13.70
14	22.34	15.24	18.78
16	24.88	17.78	21.30
20	29.96	22.86	26.38
24	35.04	27.94	31.46
26	37.58	30.48	34.00
34	47.74	40.64	44.48
40	55.36	48.26	52.10

Order Information

X 25 S0 1 - XX B X
 I: IDC 2.54mm Pitch S0: Gold / Tin 1: RoHS + PBT No. of Contacts (See Table) With Bump Blank: W/O SR
 IA: IDC A Type R: With SR