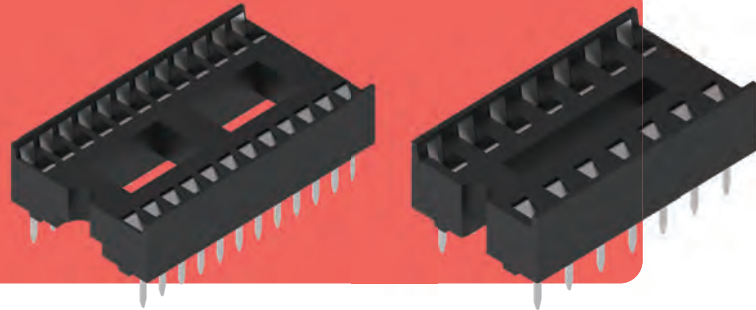
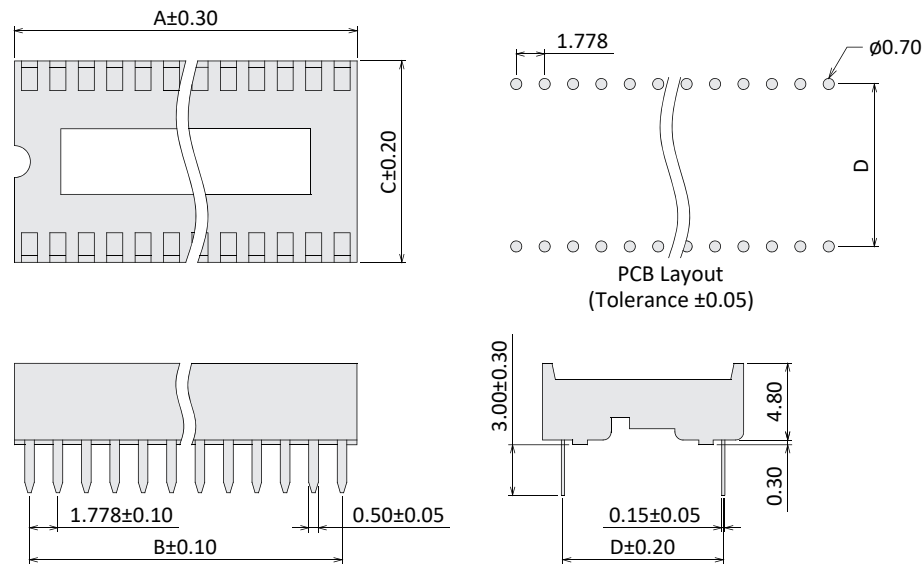


IC Socket

Current Rate: 5A
 Dielectric Voltage: 500V AC for one minute
 Insulation Resistance: 1000MΩ Min.
 Contact Resistance: 20mΩ Max.
 Material Contact: Copper Alloy, Tin Plated
 Material Insulator: Thermoplastic, UL94V-0
 Operating Temperature: -20°C~+85°C

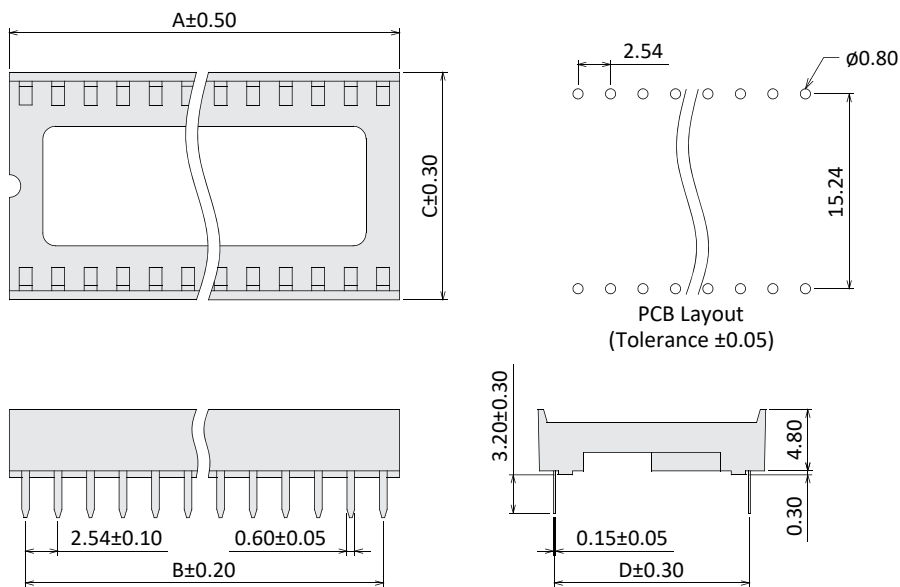


IC Socket Straight Type 1.778mm Pitch



No. of Contacts	Dimensions				
	A	B	C	D	
24	21.34	19.56	12.65	10.16	0.4"
28	24.89	23.11	12.65	10.16	
30	26.67	24.89	12.65	10.16	
32	28.45	26.67	12.65	10.16	
40	35.56	33.78	17.73	15.24	0.6"
42	37.34	35.56	17.73	15.24	
48	42.67	40.89	17.73	15.24	
52	46.23	44.45	17.73	15.24	
56	49.78	48.01	17.73	15.24	0.75"
64	56.90	55.12	21.54	19.05	

IC Socket Straight Type 2.54mm Pitch



No. of Contacts	Dimensions				
	A	B	C	D	
6	7.62	5.08	10.16	7.62	0.3"
8	10.16	7.62	10.16	7.62	
14	17.78	15.24	10.16	7.62	
16	20.32	17.78	10.16	7.62	
18	22.86	20.32	10.16	7.62	
20	25.40	22.86	10.16	7.62	
24	30.48	27.94	10.16	7.62	
28	35.56	33.02	10.16	7.62	
24	30.48	27.94	17.78	15.24	0.6"
28	35.56	33.02	17.78	15.24	
32	40.64	38.10	17.78	15.24	
40	50.80	48.26	17.78	15.24	
42	53.34	50.80	17.78	15.24	

Order Information

IS XX T 1 - X XX X

17: 1.778mm Pitch
 25: 2.54mm Pitch

T: Tin Plating

RoHS + PBT

Row Distance
 3: 0.3"(0.3x25.4)
 4: 0.4"(0.4x25.4)
 6: 0.6"(0.6x25.4)
 7: 0.75"(0.75x25.4)

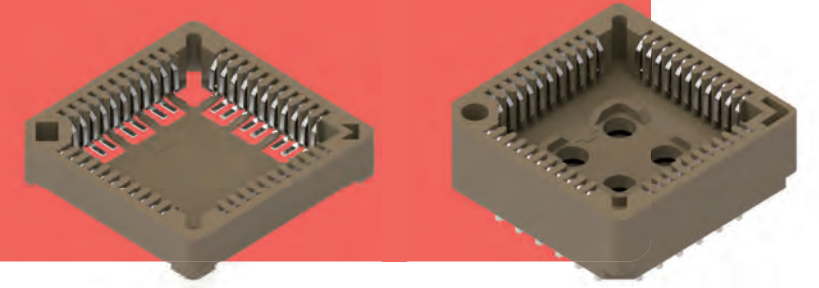
No. of Contacts

▲ Row Distance
 4/6/7 for IS17
 3/6 for IS25

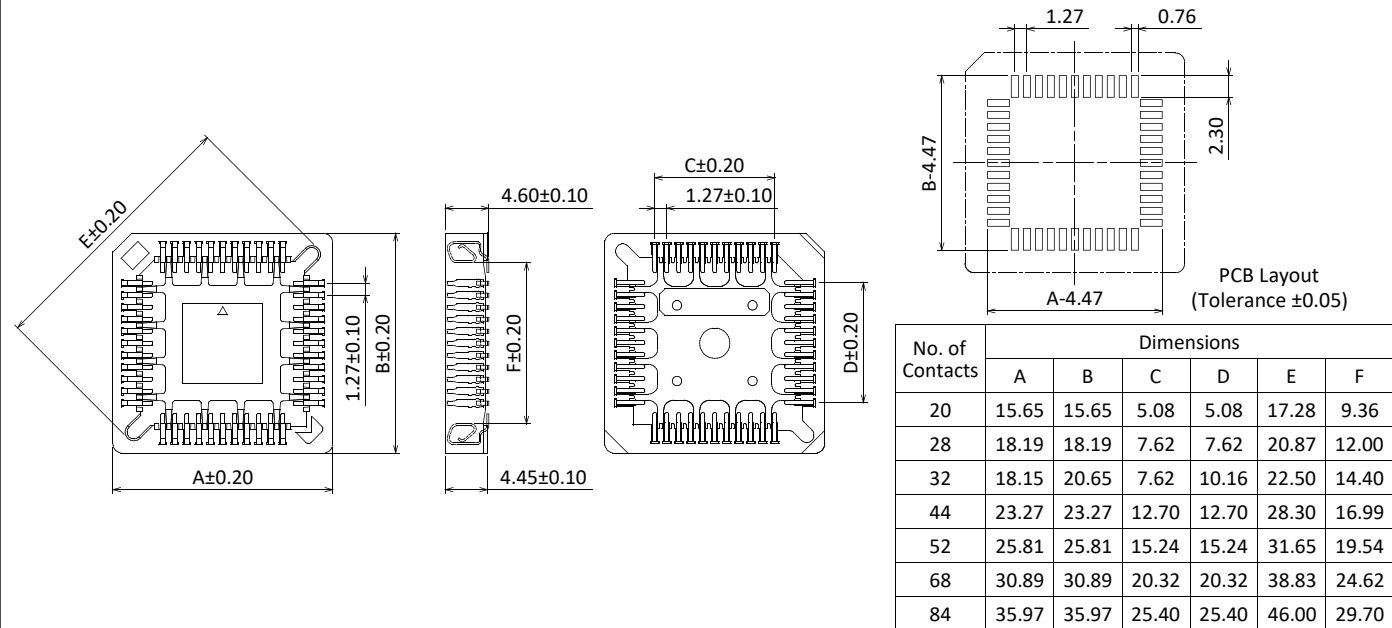
A: With Central Support
 B: W/O Central Support

PLCC Socket

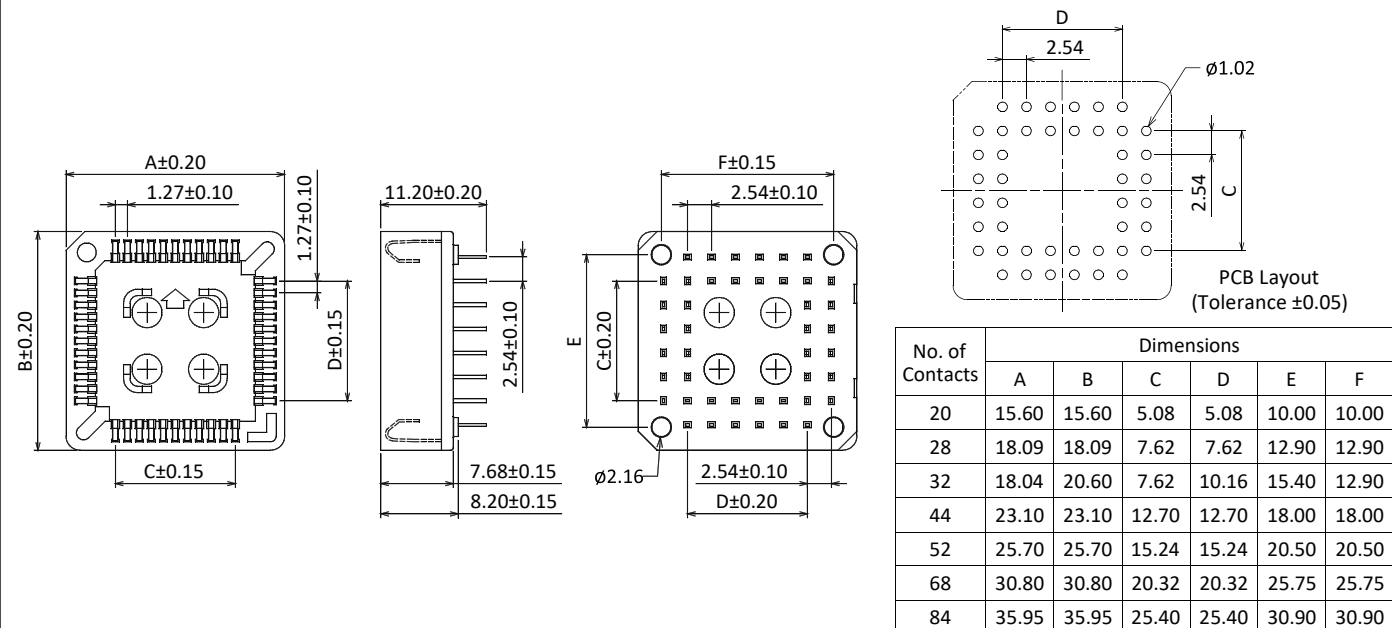
Current Rate: 3A
 Dielectric Voltage: 1000V AC for one minute
 Insulation Resistance: 1000MΩ Min.
 Contact Resistance: 20mΩ Max.
 Material Contact: Copper Alloy, Tin Plated
 Material Insulator: PPS, UL94V-0
 Operating Temperature: -40°C~+105°C



PLCC Socket SMT Type



PLCC Socket DIP Type



Order Information

C X T N - XX X

M: SMT Type
 D: DIP Type

T: Tin Plating

Insulator Color
 N: Brown

No. of Contacts

T: Tube
 R: Reel
 (R for SMT only)