

### Features

- Superior conducted attenuation performance
- Double stage power line filter
- Current rating 1A~20A
- Various output connections
- Light weight metal housing design

### Marketing Applications

- SMPS
- Automatic data processing system
- Medical scale
- Energy management system
- Medical device (not body-coupled)

### Numbering System

**1** SS4 A - **2** **3** - **4**

**1** Rated current

01,03,06,10,15,20

**2** Electrical schematic

2D,2F,2G

**3** Type of case (refer Mechanical drawing)

C1,C2

**4** Output connections (refer Output terminal)

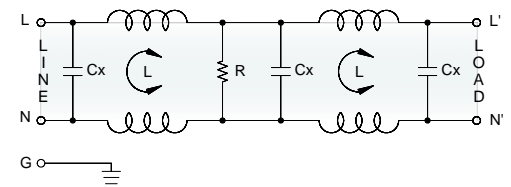
**Q**: fast-on tab (6.3mm)

**S**: screw (M4)

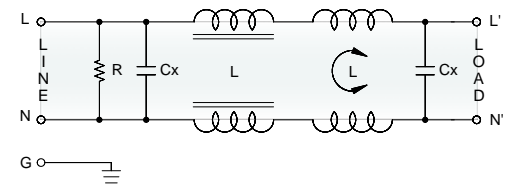
**W**: with wired (100mm)

### Electrical Schematic

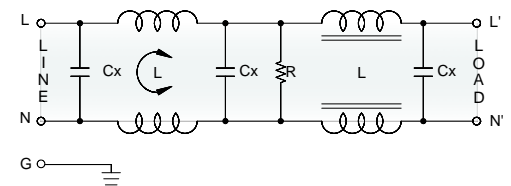
● **2D**



● **2F**



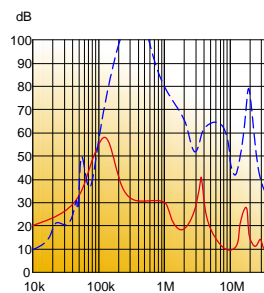
● **2G**



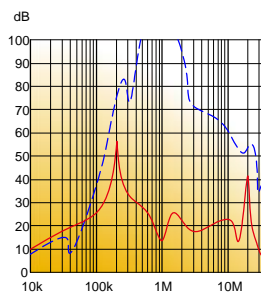
### Filter Attenuation

Insertion loss (dB) in 50 ohm system CISPR 17 (for reference only)

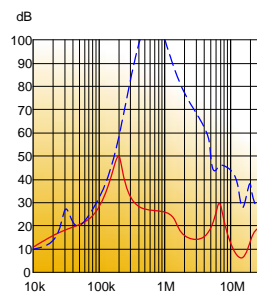
■ 1A~3A



■ 6A~10A



■ 15A~20A



Common mode / Asymmetric (L-G) ————  
 Differential mode / Symmetric (L-L) - - - - -

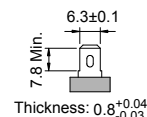
## Filter Selection Table ●

| Filter Part No. | Rated Current<br>@50°C [A] | Leakage Current<br>@250VAC/50Hz<br>[μA] | Inductance<br>@10KHz, 0.25V |      | Capacitance |            | Resistor<br>R<br>[Ω] | Output terminal |    |    |
|-----------------|----------------------------|---|-----------------------------|------|-------------|------------|----------------------|-----------------|----|----|
|                 |                            |   | [mH]                        | [μH] | Cx<br>[μF]  | Cy<br>[nF] |                      |                 |    |    |
| <b>2D:</b>      |                            |   |                             |      |             |            |                      |                 |    |    |
| 01SS4A-2DC1     | 1                          | 5                                       | 3.7                         | —    | 0.1         | —          | 2.2M                 | -Q              | -S | -W |
| 03SS4A-2DC1     | 3                          | 5                                       | 1.8                         | —    | 0.1         | —          | 2.2M                 | -Q              | -S | -W |
| 06SS4A-2DC1     | 6                          | 5                                       | 0.7                         | —    | 0.1         | —          | 2.2M                 | -Q              | -S | -W |
| 10SS4A-2DC2     | 10                         | 5                                       | 0.3                         | —    | 0.1         | —          | 2.2M                 | -Q              | -S | -W |
| 15SS4A-2DC2     | 15                         | 5                                       | 0.9                         | —    | 0.1         | —          | 2.2M                 | -Q              | -S | -W |
| 20SS4A-2DC2     | 20                         | 5                                       | 0.5                         | —    | 0.1         | —          | 2.2M                 | -Q              | -S | -W |
| <b>2F:</b>      |                            |   |                             |      |             |            |                      |                 |    |    |
| 03SS4A-2FC1     | 3                          | 5                                       | 1                           | 30   | 0.22        | -          | 330K                 | -Q              | -S | -W |
| 06SS4A-2FC2     | 6                          | 5                                       | 1.7                         | 70   | 0.22        | -          | 330K                 | -Q              | -S | -W |
| 10SS4A-2FC2     | 10                         | 5                                       | 1.2                         | 40   | 0.22        | -          | 330K                 | -Q              | -S | -W |
| <b>2G:</b>      |                            |   |                             |      |             |            |                      |                 |    |    |
| 03SS4A-2GC1     | 3                          | 5                                       | 1                           | 30   | 0.22        | -          | 330K                 | -Q              | -S | -W |
| 06SS4A-2GC2     | 6                          | 5                                       | 1.7                         | 70   | 0.22        | -          | 330K                 | -Q              | -S | -W |
| 10SS4A-2GC2     | 10                         | 5                                       | 1.2                         | 40   | 0.22        | -          | 330K                 | -Q              | -S | -W |

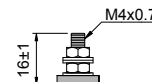
## Output Terminal

(unit: mm)

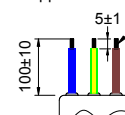
- **Q:** fast-on tab based on UL310 standard



- **S:** screw based on ISO4032 standard

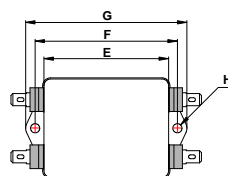
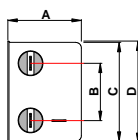


- **W:** with wired stripped and tinned



## Mechanical Drawing (unit: mm) ●

- C type



| Case | C1         | C2     |
|------|------------|--------|
| A    | 30         | 39.5   |
| B    | 22.4       | 30     |
| C    | 46         | 52.5   |
| D    | 48         | 54     |
| E    | 52         | 65.5   |
| F    | 61         | 74.7   |
| G    | 71         | 84.8   |
| H    | 2-Ø5.3x6.3 | 2-Ø4.8 |