

Features

- General conducted attenuation performance
- Easy to install, compact size
- Front mounting
- Current rating 1A~10A
- With IEC320 AC socket and fuse holder

Marketing Applications

- Controls and communication systems
- Rack mounting equipment
- Audio and video processor
- Slot machine
- Lighting equipment

Numbering System

1 SS3 **2** - **3** **4** **5** **6** **7** - **8**

1 Rated current

01,02,04,06,10

2 Electrical schematic

Blank: standard

3 Additional schematic (optional)

A: high performance

4 Fuse holder

- 1: can be installed single fuse
- 2: can be installed dual fuses

5 Components value (refer Filter selection table)

S: Cx=0.1uF, Cy=2.2nF
U: Cx=0.1uF, Cy=0.47nF

6 Grounded choke (optional)

G: Lg= 100uH

7 Bleeder resistor (optional)

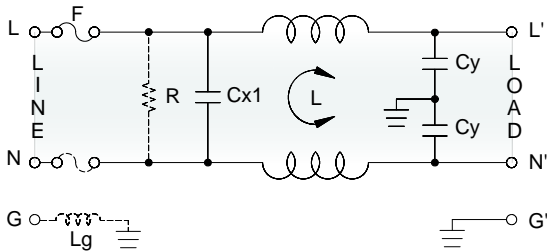
R: R= 1M ohm; 1/4W min.

8 Output connections (refer Output terminal)

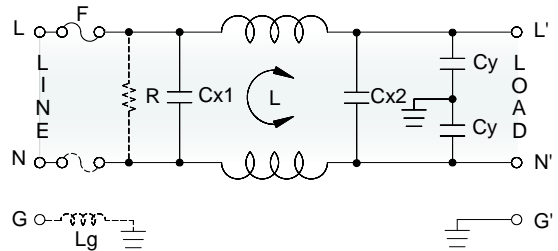
Q: fast-on tab (6.3mm)
W: with wired (100mm)

Electrical Schematic •

• Blank: standard



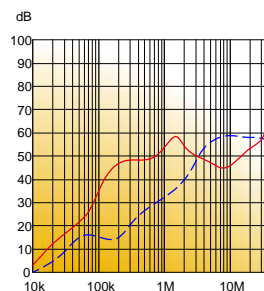
• A: high performance



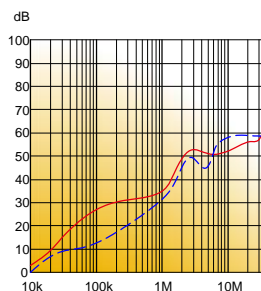
Filter Attenuation

Insertion loss (dB) in 50 ohm system CISPR 17 (for reference only)

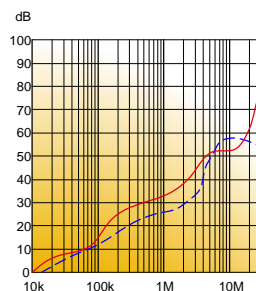
1A~3A



4A~6A





8A~10A



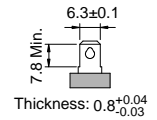
Common mode / Asymmetric (L-G) ————
Differential mode / Symmetric (L-L) - - - -

Filter Selection Table •

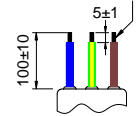
| Filter Part No. | Rated Current @50°C [A] | Leakage Current @250VAC/50Hz [μA] | Inductance @10KHz, 0.25V [mH] | Capacitance | | | Output terminal | |
|----------------------------|-------------------------------|---|-------------------------------------|-------------|-------------|------------|---|---|
| | | | | Cx1 [μF] | Cx2 [μF] | Cy [nF] |  |  |
| Blank: standard | | | | | | | | |
| 01SS3-S.. | 1 | 450 | 6.5 | 0.1 | — | 2.2 | -Q | -W |
| 02SS3-S.. | 2 | 450 | 3.8 | 0.1 | — | 2.2 | -Q | -W |
| 04SS3-S.. | 4 | 450 | 1.6 | 0.1 | — | 2.2 | -Q | -W |
| 06SS3-S.. | 6 | 450 | 0.8 | 0.1 | — | 2.2 | -Q | -W |
| 10SS3-S.. | 10 | 450 | 0.2 | 0.1 | — | 2.2 | -Q | -W |
| 01SS3-U.. | 1 | 100 | 11 | 0.1 | — | 0.47 | -Q | -W |
| 02SS3-U.. | 2 | 100 | 6.5 | 0.1 | — | 0.47 | -Q | -W |
| 04SS3-U.. | 4 | 100 | 4.2 | 0.1 | — | 0.47 | -Q | -W |
| 06SS3-U.. | 6 | 100 | 1.6 | 0.1 | — | 0.47 | -Q | -W |
| 10SS3-U.. | 10 | 100 | 0.4 | 0.1 | — | 0.47 | -Q | -W |
| A: high performance | | | | | | | | |
| 01SS3-A.S.. | 1 | 450 | 6.5 | 0.1 | 0.1 | 2.2 | -Q | -W |
| 02SS3-A.S.. | 2 | 450 | 3.8 | 0.1 | 0.1 | 2.2 | -Q | -W |
| 04SS3-A.S.. | 4 | 450 | 1.6 | 0.1 | 0.1 | 2.2 | -Q | -W |
| 06SS3-A.S.. | 6 | 450 | 0.8 | 0.1 | 0.1 | 2.2 | -Q | -W |
| 10SS3-A.S.. | 10 | 450 | 0.2 | 0.1 | 0.1 | 2.2 | -Q | -W |

Output Terminal (unit: mm)

- **Q:** fast-on tab based on UL310 standard



- **W:** with wired stripped and tinned



Mechanical Drawing (unit: mm)

- screw mount

